

# GRAPHTEC

PRECISION CUTTING SOLUTIONS

# FC9000

## ROLL FED CUTTER SERIES

FC9000



TAKE UP SYSTEM OPTIONAL



### VIDEO TRAINING

PRESS PLAY ► GET TO WORK

## HIGH PERFORMANCE • MAXIMUM PRODUCTIVITY

FC9000-75

30"



FC9000-100

42"



FC9000-140

54"



FC9000-160

64"



**GRAPHTEC**  
Graphtec America, Inc.

# PRECISION CUTTING SOLUTIONS

### PERFORMANCE & PRECISION MEETS VALUE

Graphtec **FC9000 Series** is the most advanced, versatile roll fed cutting plotter to date. Revered for its dependable, high-precision cutting capabilities with both printed and unprinted materials, the FC9000 Series is the ultimate finishing solution for the wide format signage, apparel, and automotive industries. A robust feeding system, tool head, and new ARMS sensor further contribute to the FC Series' class leading performance.

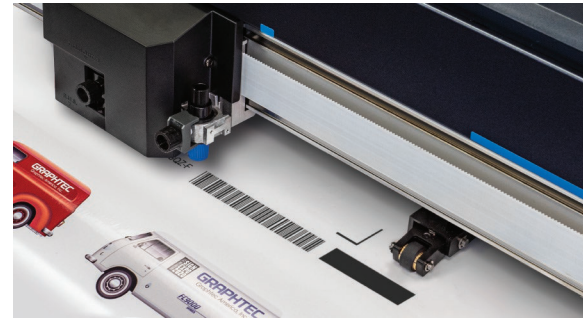
With the **USB Offline Operation** function, cutting data saved to USB flash memory can be output directly to the cutting plotter, enabling users to operate the FC9000 cutter without a computer.

**Data Link Barcode System** allows cutting different jobs with different data sequentially by detecting the Start Mark of each new job. By reading the Graphtec barcode, the FC9000 automatically detects its linked data from a PC or USB Drives. This function is available regardless of printer or RIP software used.

The FC9000 Series barcode data management system allows the **Continuous Cutting** of multiple jobs with different data sequentially by detecting the Start Mark of each new job.

With **Multiple Mark Compensation**, the FC9000 can significantly increase your productivity. Contour cutting is repeated for each copy, cutting production time for Print & Cut applications.

**Auto Paneling** automatically splits long-length jobs into smaller pages that are cut sequentially to prevent skewing.



Barcode Scanning System



USB Offline Operation



Powerful Cutting Head: 600gf

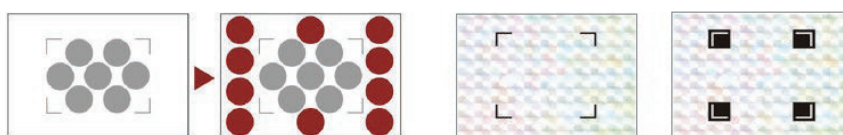


Intuitive 3.7" LCD Control Panel

### ARMS 8.0 NEW & IMPROVED FUNCTIONS

**Advanced Registration Mark Sensing** system delivers precise Print & Cut results using sensors to detect registration marks and perform axis alignment. Efficiency boosting functions improve productivity for Print & Cut applications such as labels and decals.

**Expanded Contour Cutting Area** expands the Print & Cut area to include objects outside of the registration marks. Production efficiency is enhanced and media waste is reduced.



Expanded Contour Cutting Area

Reversed Color Registration Marks



Middle Marks on X & Y-axis

**Segment Area Compensation (X-Y)** Recognizes middle marks between the registration marks to correct X / Y-axis distortion for greater accuracy when cutting longer length media.

**Reversed Color Registration Marks** With this reversed color output, sufficient contrast is created for contour cutting of preprinted ultra glossy & reflective media.

# PRECISION CUTTING SOLUTIONS

## PRODUCTION CAPABILITIES



**600gf Cut Force, 58.5"/s Speed for up to 59.1mil Media Thickness**

The FC9000 Series offers best-in-class productivity and abilities with wider range of compatible media. Featuring blazing fast **58.5"/s** cutting speeds for media up to **59.1 mil** at an impressive cutting force of **600 gf**.

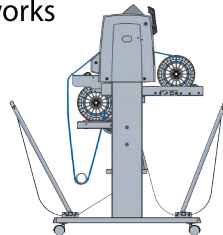
### Reliable Long-length Tracking with the Auto Take-up Reel System

(FC9000-140 & 160 models only)

The optional auto take-up system boosts production efficiency by automatically winding rolls of media using the equipped infrared sensor.



The Data Link / Bar Code feature works with the Take-up System to allow precision tracking of multiple jobs per roll up to 65 ft of media.



- FC9000-140 (OPH-A43)
- FC9000-160 (OPH-A44)



## STANDARD ACCESSORIES



**Blade Holder:**  
PHP33-CB09N-HS



**Media Flanges:**  
Ensures Accurate Media Tracking



**Fiber Pen:** Lumocolor-311-BK  
**Pen Adapter:** PHP31-FIBER



**Blade:**  
CB09UB

**Blade Loupe:** PM-CT-001  
This standard accessory helps to easily adjust blade length



### Included Design Software and Plugin:

Graphtec provides you all of the tools necessary to create professional products with confidence.

- **Cutting Master 5 Plug-in:**

Adobe Illustrator (PC / MAC)  
CorelDRAW (PC)



- **Graphtec Studio 2:**

Design Software - PC / MAC



- **Windows Driver:** AutoCAD etc.

## GRAPHTEC 3 YEAR STANDARD WARRANTY

## MARKET APPLICATIONS



SYMPATICO  
DESIGN



High Intensity Reflective



Safety Shielding



Sandblast Masking



Vinyl Signage

Print and Cut



Window Tinting Film



Vinyl Decals



Paint Protection Film

# FC9000 SPECIFICATIONS



**MODEL :** **FC9000-75**      **FC9000-100**      **FC9000-140**      **FC9000-160**

<b>Configuration :</b>	Grit-rolling Plotter Driven by a Digital Servo Motor			
<b>Maximum Cutting Width :</b>	30"	42"	54"	64"
<b>* Guaranteed Tracking :</b>	30" x 50'	42" x 50'	54" x 50'	64" x 50'
<b>Mountable Media Width :</b>	2" to 36"	2" to 48"	2" to 60"	2" to 72"
<b>Maximum Cutting Speed :</b>	58.5"/s @ 45° Direction			
<b>Cutting Force :</b>	600 gf in 48 Steps			
<b>Number of Push Rollers :</b>	2 Rollers	3 Rollers	4 Rollers	4 Rollers
<b>Mountable Number of Tools :</b>	1 Tool (cutting blade, plotting pen or pouncing tool) in standard; 2 Tools (cutting blade and plotting pen) when second pen-holder (optional) is installed			
<b>Minimum Character Size :</b>	Approximately 5 mm Alphanumeric (varies depending on character font and media)			
<b>ARMS / Barcode / Data Link :</b>	YES			
<b>Offline Output Function :</b>	USB Memory - 64 Files			
<b>Maximum Cross Cut Width :</b>	30"	42"	54"	64"
<b>Interface :</b>	Ethernet (10BASE-T/100BASE-TX)   USB 2.0 High Speed			
<b>Programmable Resolution :</b>	GP-GL™ mode: 0.1 / 0.05 / 0.025 / 0.01 mm • HP-GL®: 0.025 mm			
<b>Mechanical Resolution :</b>	0.005 mm (5µm)			
<b>Maximum Media Thickness :</b>	59.1 mil (1.48mm)			
<b>Condition Settings :</b>	Dual Configuration - 2 User Settings with 8 Separate Condition Settings per User			
<b>External Dimensions :</b>	w 53" x d 45" x h 48"	w 65" x d 45" x h 48"	w 77" x d 45" x h 48"	w 87" x d 45" x h 48"
<b>Weight :</b>	108lbs	123lbs	141lbs	154lbs
<b>Compatible Media :</b>	Self-adhesive Vinyl Film, Diamond Grade, Fluorescent Film, Reflective Film, Sandblast Resist Rubber High-intensity Reflective Film, Window Tint Film, Paint Protection Film, Automotive Paint Protection Film			

\* Operated with Graphtec specified cutting conditions and media. For long-length cutting, the basket is used



**GRAPHTEC STANDARD WARRANTY: 3 YEARS PARTS & LABOR WITH ONLINE PRODUCT REGISTRATION**

<b>Software :</b>	<b>Cutting Master 5 - Plugin</b> Adobe Illustrator - Mac/ Win CorelDraw - Win	<b>Graphtec Studio 2</b> Win/Mac Software	<b>Windows Driver</b> AutoCad / Vector Drawing Software Requiring a Driver
-------------------	---	--	--

**VIDEO TRAINING**  
PRESS PLAY ▶ GET TO WORK  
[www.graphtecamerica.com/videos](http://www.graphtecamerica.com/videos)

**Graphtec Video Training** is a comprehensive series of instructional videos that are key to fully understanding the capabilities of the **FC9000 Series** cutter. **Advanced Features** and **Optional Accessories** are also demonstrated in depth so you can be fully trained and ready to boost productivity by mastering all the features and utilizing the full potential of this powerful roll-fed cutter.